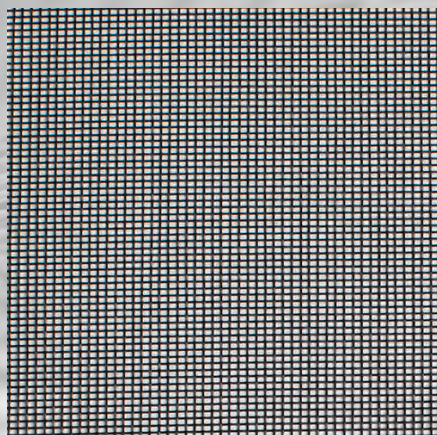


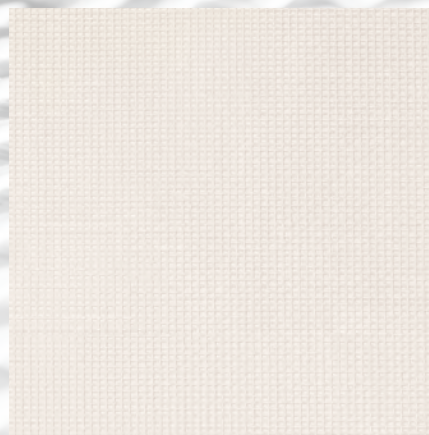


TEXTILENE®
BRAND FABRIC
nano™ 50/55/60

TEXTILENE® nano™ 50



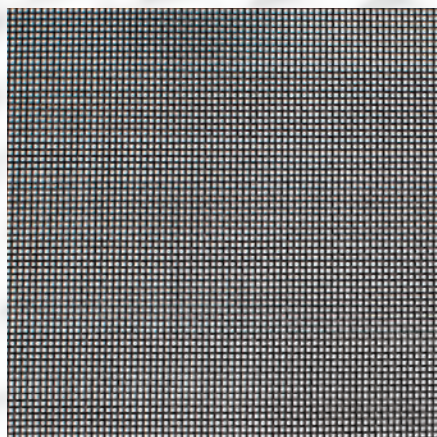
Black
T18FBS006 x 36"
T18FBS007 x 48"
T18FBS011 x 60"
T18FBS001 x 72"
T18FBS005 x 84"
T18FBS002 x 96"
T18FBS004 x 108"
T18FBS016 x 120"
T18FBS032 x 126"
T18FBS034 x 144"



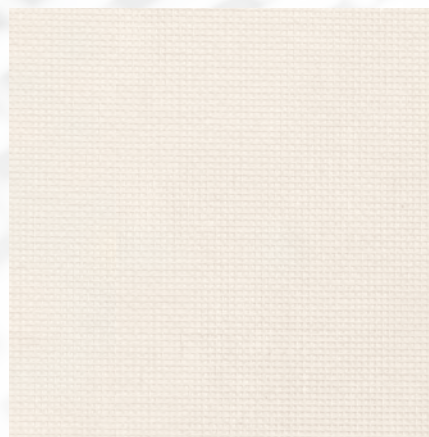
Due to the technical limitations of digital cameras and inconsistencies of display monitors, the characteristics and colors of the fabrics seen on your screen may be slightly different than the actual product.

White
T18FBS015 x 120"

TEXTILENE® nano™ 55

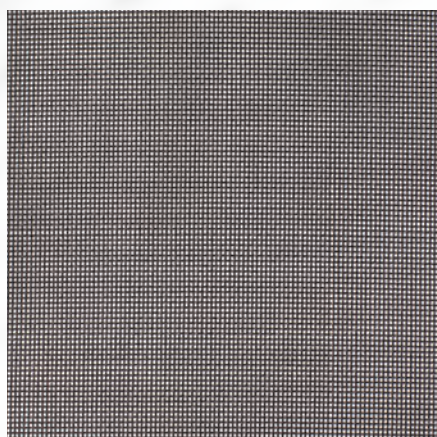


Black
T18FFS003 x 120"
T18FFS010 x 126"



White
T18FFS006 x 120"
T18FFS011 x 126"

TEXTILENE® nano™ 60



Black
T18FHS008 x 36"
T18FHS001 x 48"
T18FHS009 x 60"
T18FHS006 x 72"
T18FHS010 x 84"
T18FHS002 x 96"
T18FHS005 x 108"
T18FHS003 x 120"
T18FHS022 x 126"

Over the years TEXTILENE® nano™ 50/55/60 has provided innovative technology for multiple applications. Our TEXTILENE® nano™ 50/55/60 fabrics offer superior performance characteristics and is covered by Twitchell's™ ten-year limited warranty.

Metric Conversions

36" = 91.44 cm	96" = 243.84 cm
48" = 121.92 cm	108" = 274.32 cm
60" = 152.4 cm	120" = 304.8 cm
72" = 182.88 cm	126" = 320.04 cm
84" = 213.36 cm	

***Custom colors and widths available. Minimum order of 1000 yds. Upcharges may apply.**

**** Available in 33.3 lyd rolls.**

Specifications



REACH COMPLIANCE



GREENGUARD GOLD



LEAD FREE



RoHS COMPLIANT



PRINTABLE



LIMITED WARRANTY



MADE IN USA



Technical Data

Product Description: A fabric using .014" diameter vinyl coated 420 denier polyester core yarns woven in the warp and fill direction.

Textilene® nano™ 50 - Item Number: T18FBS

Attribute	ASTM	Warp	Fill	Typical
Construction, end/inch	D3775-12	17.0 ±0.5	14.0 ±0.5	
Weight, oz/yd ²	D3776-09	-	-	5.9
Weight, g/m ²	D3776-09	-	-	200
Tensile Strength (grab), lbf /daN	D5034-09	229.2 / 102	230.7 / 102.6	
Tensile Strength (strip), lbf /daN	D5035-11	111.6 / 49.6	85.5 / 38	
Tear Strength (trapezoidal), lbf /daN	D5733	24.9 / 11.1	42.9 / 19.1	
Elongation, %	D5035-11	29.8	21.6	
Abrasion Resistance (CS10/500 cycles/ with no added weight)	D3884-09	No Exposure of Core Yarn		
Flammability Rating		CA TB 117-2013		
Weatherability, 1200 hours	G154	Trace Discoloration		
Mildew Resistance	G21-13	No Growth		
Thickness, inches/mm	D1777-96	0.021" / 0.533mm		

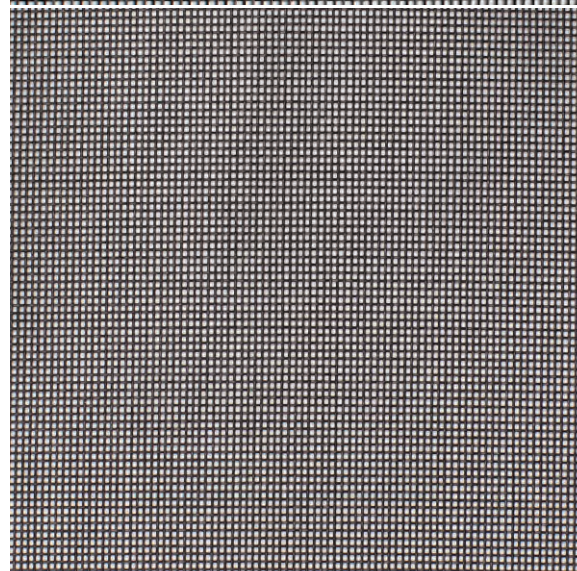
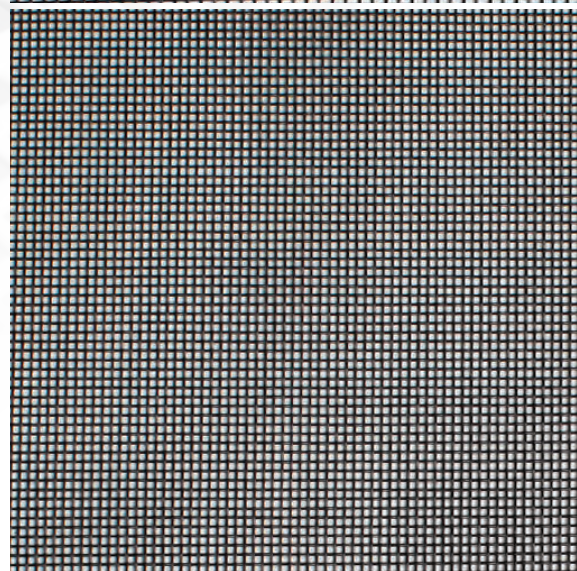
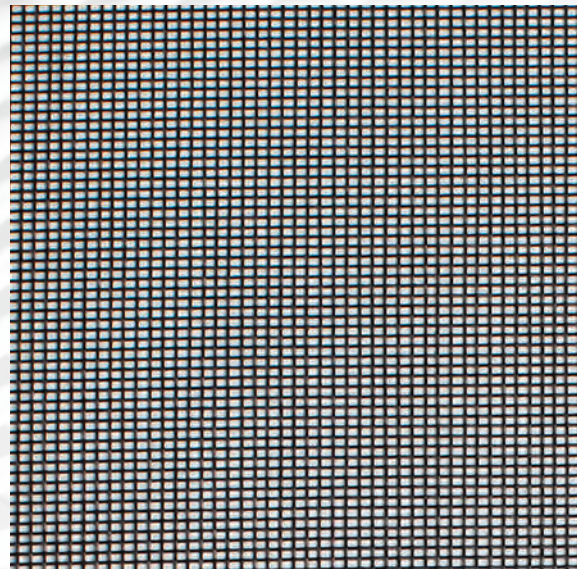
Textilene® nano™ 55 - Item Number: T18FFS

Attribute	ASTM	Warp	Fill	Typical
Construction, end/inch	D3775-12	17.0 ±0.5	17.0 ±0.5	
Weight, oz/yd ²	D3776-09	-	-	7.1
Weight, g/m ²	D3776-09	-	-	240.7
Tensile Strength (grab), lbf /daN	D5034-09	273.3 / 121.6	339.4 / 151	
Tensile Strength (strip), lbf /daN	D5035-11	100.9 / 44.9	116.1 / 51.6	
Tear Strength (trapezoidal), lbf /daN	D5733	28.2 / 12.5	25.7 / 11.4	
Elongation, %	D5035-11	21.5	29.9	
Abrasion Resistance (CS10/500 cycles/ with no added weight)	D3884-09	No Exposure of Core Yarn		
Flammability Rating		CA TB 117-2013		
Weatherability, 1200 hours	G154	Trace Discoloration		
Mildew Resistance	G21-13	No Growth		
Thickness, inches/mm	D1777-96	0.022" / 0.5588mm		

Textilene® nano™ 60 - Item Number: T18FHS

Attribute	ASTM	Warp	Fill	Typical
Construction, end/inch	D3775-12	17.0 ±0.5	20.0 ±0.5	
Weight, oz/yd ²	D3776-09	-	-	7.3
Weight, g/m ²	D3776-09	-	-	247.5
Tensile Strength (grab), lbf /daN	D5034-09	274.1 / 121.9	232.6 / 103.5	
Tensile Strength (strip), lbf /daN	D5035-11	122.8 / 54.6	107.6 / 47.9	
Tear Strength (trapezoidal), lbf /daN	D5733	35.5 / 15.8	32.6 / 14.5	
Elongation, %	D5035-11	30.8	25.4	
Abrasion Resistance (CS10/500 cycles/ with no added weight)	D3884-09	No Exposure of Core Yarn		
Flammability Rating		CA TB 117-2013		
Weatherability, 1200 hours	G154	Trace Discoloration		
Mildew Resistance	G21-13	No Growth		
Thickness, inches/mm	D1777-96	0.022" / 0.559mm		

The above results are a representation of real data from single test samples. Presently no specification is incorporated.

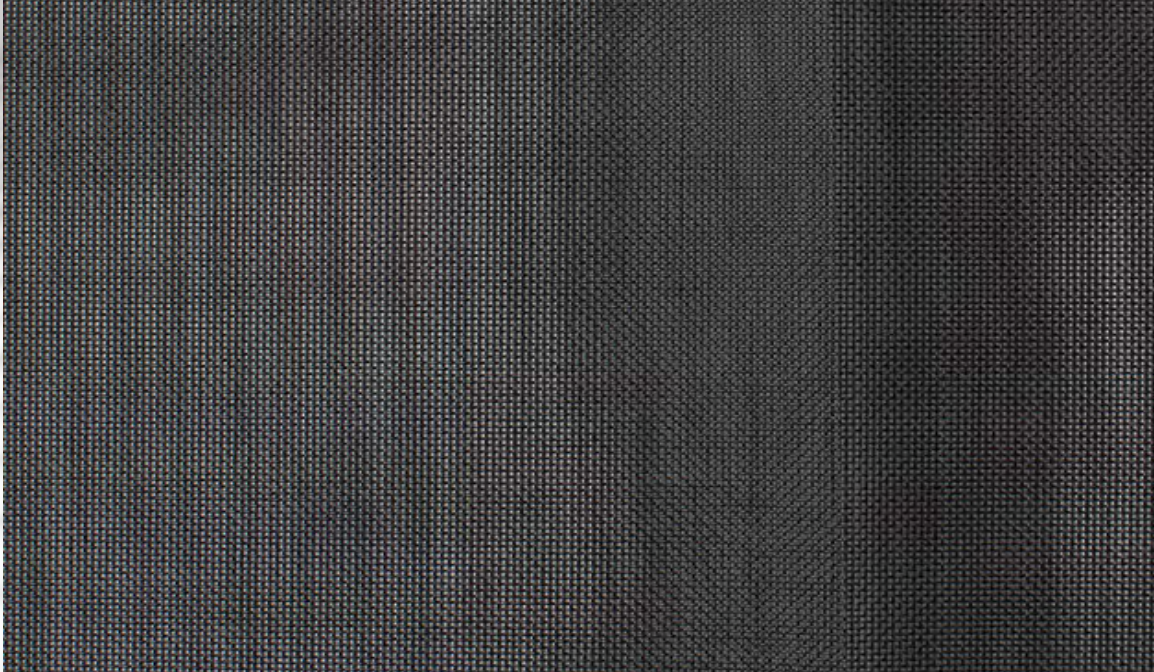




TEXTILENE®
BRAND FABRIC

nano™ 70
No-See-Ums

15 Year
Warranty



Due to the technical limitations of digital cameras and inconsistencies of display monitors, the characteristics and colors of the fabrics seen on your screen may be slightly different than the actual product.

23 x 21 SUPERIOR INSECT PROTECTION

Textilene® Nano 70™ is a PVC coated polyester screening that is exceptionally UV stable, flame resistant, easy to clean, and engineered with antimicrobial agents. Nano 70's fine mesh keeps out the tiniest insects, resists punctures and tears, and lasts three times longer than fiberglass screens. Designed to reduce heat transfer and solar glare, Textilene® fabric can lower overall energy cost and protect indoor furnishings.

Sun Blockage: 70% | **Roll Length:** 33.3 Linear Yards

T18F3S004 x 36" | **T18F3S007** x 48" | **T18F3S008** x 60" | **T18F3S005** x 72"

T18F3S009 x 84" | **T18F3S003** x 96" | **T18F3S006** x 108" | **T18F3S001** x 126"



REACH COMPLIANCE



GREENGUARD GOLD



RoHS COMPLIANT



LEAD FREE



ANTIMICROBIAL



FLAME RESISTANT



PRINTABLE



TOY ACT



MADE IN USA



LIMITED WARRANTY



*Custom colors and widths available. Minimum order of 1000 yds. Upcharges may apply. ** Available in 33.3 lyd rolls.

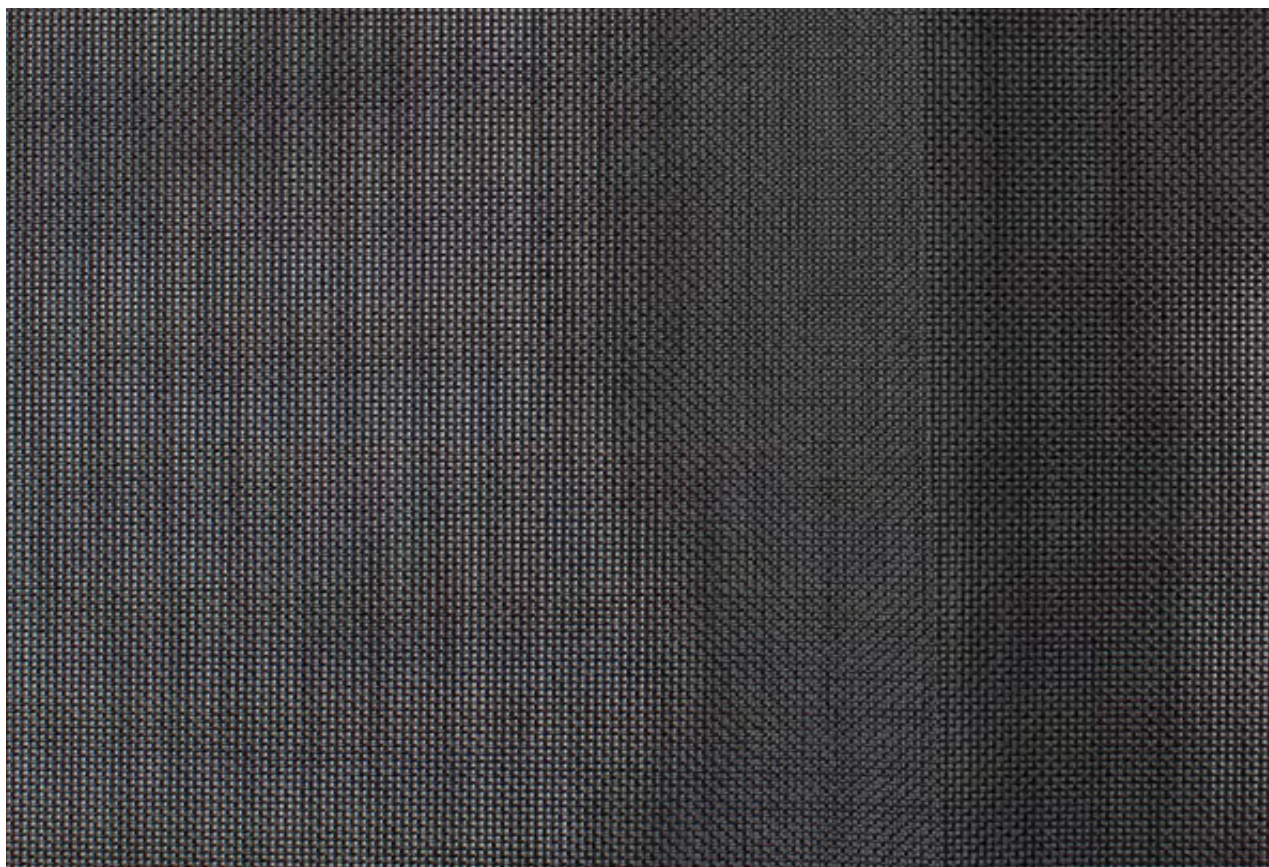
1-800-633-7550 | twitchellcorp.com

TEXTILENE[®]
nano 70

nano[™] 70
No-See-Ums



23 x 21 SUPERIOR INSECT PROTECTION



Due to the technical limitations of digital cameras and inconsistencies of display monitors, the characteristics and colors of the fabrics seen on your screen may be slightly different than the actual product.

Product Number: T18F3 | **Roll Length:** 33.3 Linear Yards | **Sun Blockage:** 70%

Product Description: A fabric using .014" diameter vinyl-coated 420 denier polyester core yarn in the warp and fill.

ATTRIBUTE	ASTM	WARP	FILL	TYPICAL
Construction	D3775-12	23 +/- 0.5	21 +/- 0.5	
Weight, oz/yd2	D3776-09			9.8
Tensile Strength (grab), lbf	D5034-09	315.6	321.9	
Tensile Strength (strip), lbf	D5035-11	140.8	138.6	
Tear Strength, (Trapezodial), lbf	D5733	34.6	30.1	
Elongation, %	D5035-11	11.3	11.4	
Abrasion Resistances	D3884-09			No exposure of core yarn
Flammability Rating				CA 117-2013, CS 191-53
Weatherability, 1200 hours	G154			Trace discoloration
Mildew Resistance	G21-13			No Growth
Thickness, inches	D1777-96			0.0219

The above results are a representation of real data from single test samples. Presently no specification is incorporated.

DISTRIBUTED OR MANUFACTURED BY:



Due to the technical limitations of digital cameras and inconsistencies of display monitors, the characteristics and colors of the fabrics seen on your screen may be slightly different than the actual product.

T18FVS026
Flat Black

TEXTILENE® nano™ 95 is a durable, yet lightweight synthetic fabric. It is lighter and finer with the same technical qualities as the original TEXTILENE®. TEXTILENE® nano™ 95 is excellent for exterior and interior use. It is flame resistant, fade resistant, and can reduce energy costs while blocking up to 95% of the sun’s harmful rays.

Specifications

REACH Compliant - Regulated by Registration, Evaluation, Authorization and Restriction of Chemicals. REACH places greater responsibility on industry to manage the risks that chemicals may pose to human health and the environment.

Children’s Toy Act - Does not contain harmful phthalates listed under Section 108 of the Consumer Product Safety Improvement Act of 2008 (CPSIA).

Fire Classification - Passes California U.S. Title 19 (small scale), NFPA701-2015 TM#1 (small scale), NFPA 101 (Class A Rating), UBC (Class 1), BS 5867 2008 Part 2 Type B Performance, NFPA 701 TM #2 (large scale), and CAN/ULC-S 109-03 (large and small scale).

Environmental Certification - GREENGUARD gold certified. Acceptable for use in environments such as schools and healthcare facilities. Complies with requirements of the State of California’s Department of Public Health “Standard Method for Testing and Evaluation of Volatile Organic Chemical Emissions from Indoor Sources Using Environmental Chambers, Version 1.1 (2010)” (also known as California Section 01350).

RoHS Compliant - Free of Lead (Pb), Cadmium (Cd), Mercury (Hg), Hexavalent chromium (Hex-Cr), Polybrominated biphenyls (PBB), and Polybrominated diphenyl ethers (PBDE).

Bacteria and Fungal Resistance - Passes ASTM E 2180, ASTM G21. Includes specially formulated antimicrobial.



REACH COMPLIANCE



FLAME RESISTANT



GREENGUARD GOLD



LEAD FREE



PRINTABLE



RoHS COMPLIANT



MADE IN USA



LIMITED WARRANTY

Technical Data

Item Number: T18FVS, T18FVT

Product Description: A woven fabric using .014” diameter vinyl coated 420 denier polyester core yarns woven in the warp and fill.

Attribute	ASTM	Warp	Fill	Typical
Construction, end/inch	D3775-17	36.0 ±0.5	34.0 ±0.5	
Weight, oz/yd ²	D3776-09			14.7
Weight, g/m ²	D3776-09			498.5
Tensile Strength (grab), lbf / daN	D5034-09	423.6 / 192.1	382.2 / 173.4	
Tensile Strength (strip), lbf / daN	D5035-11	218.5 / 99.1	188.4 / 85.5	
Tear Strength (trapezoidal), lbf / daN	D1117-99	58.4 / 26.5	42.2 / 19.1	
Elongation, %	D5035-11	12.7	11.6	
Abrasion Resistance (CST10/500 cycles/ with no added weight)	D3884-09	No Exposure of Core Yarn		
Flammability Rating		CA Title 19 & NFPA 701		
Weatherability, 1200 hours	G154-16	No Discoloration		
Mildew Resistance	G21-13	Pass		
Thickness, inches / mm	D1777-15			0.026 / 0.66

The above results are a representation of real data from single test samples. Presently no specification is incorporated.

Style	Total Solar			Visible			Insulating Glass			Insulating Glass		
	Ts	Rs	As	Ts	Rs	As	1/2” Clr.	1” Clr.	1” HA	1/2” Clr.	1” Clr.	1” HA
Flat Black Profile Angle 0	8	4	88	8	4	88	0.26	0.21	0.16	0.20	0.13	0.11
Flat Black Profile Angle 45	5	8	87	6	9	85	0.15	0.15	0.15	0.11	0.11	0.11

DISTRIBUTED OR MANUFACTURED BY:

***Custom colors and widths available. Minimum order of 1000 yds. Upcharges may apply. ** Available in 33.3 lyd rolls.**



White
T18FVS025 x 126"

Bone
T18FVT057 x 126"

Sable
T18FVT056 x 126"

Stone Texture
T18FVT058 x 126"

Shadow Texture
T18FVT055 x 126"



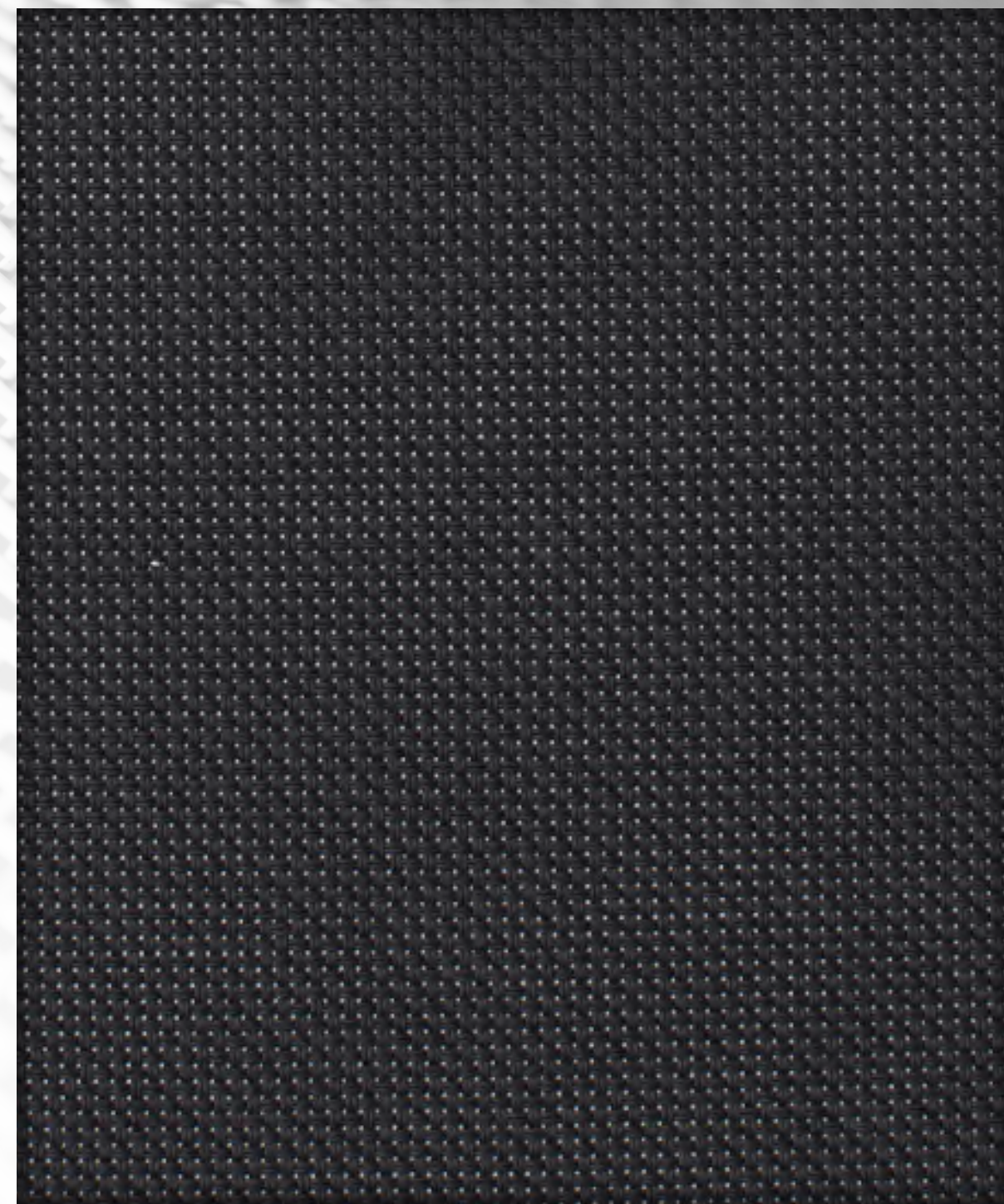
Espresso Texture
T18FVT061 x 126"

Granite
T18FVT059 x 126"

Tobacco
T18FVT054 x 126"

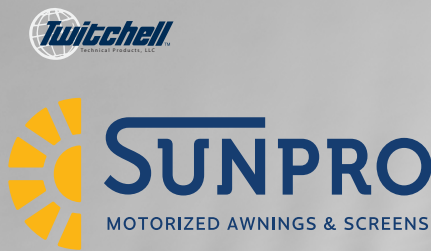
Charcoal
T18FVT060 x 126"

Flat Black
T18FVS026 x 126"

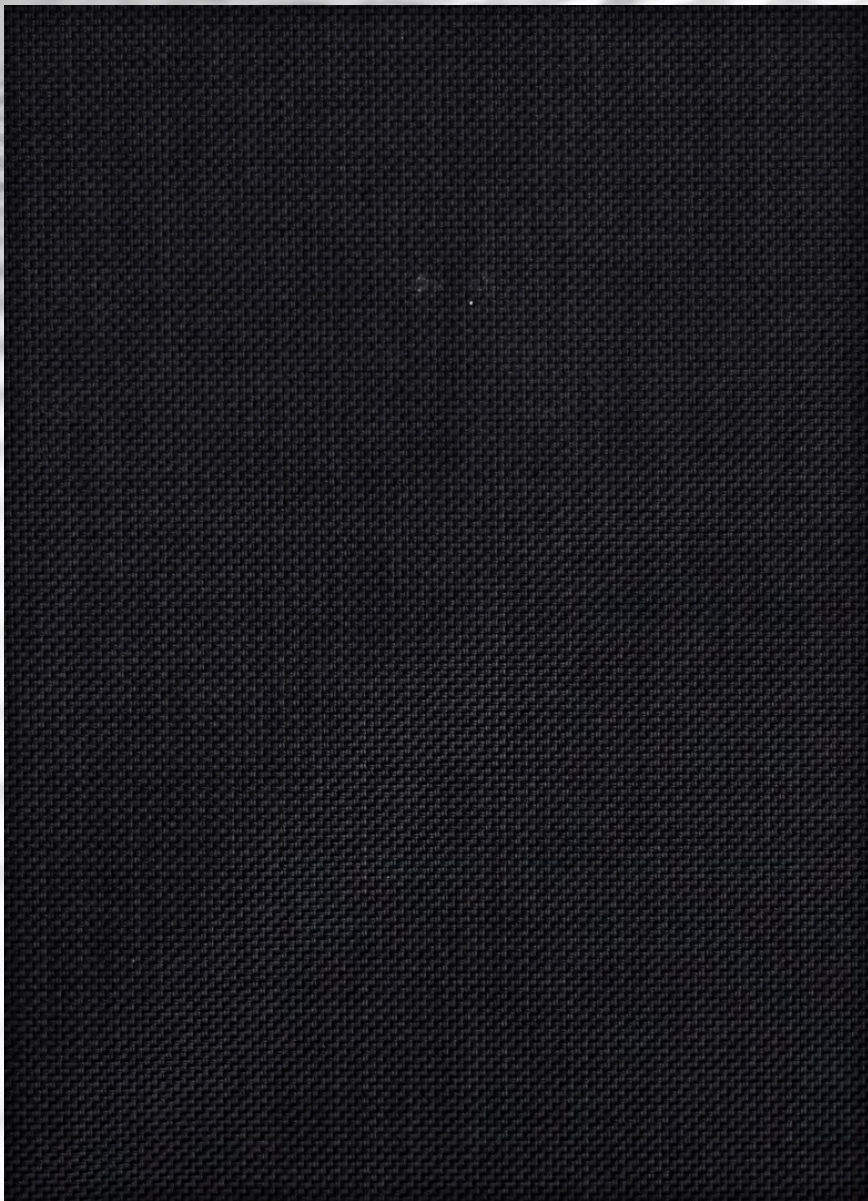


Due to the technical limitations of digital cameras and inconsistencies of display monitors, the characteristics and colors of the fabrics seen on your screen may be slightly different than the actual product.

T18FVS026
Flat Black



TEXTILENE[®]
BRAND FABRIC
nano™ 97



Due to the technical limitations of digital cameras and inconsistencies of display monitors, the characteristics and colors of the fabrics seen on your screen may be slightly different than the actual product.

T18F4S002
Flat Black

TEXTILENE[®] nano™ 97 is a durable, yet lightweight synthetic fabric. It is lighter and finer with the same technical qualities as the original TEXTILENE[®]. TEXTILENE[®] nano™ 97 is excellent for exterior and interior use. It is flame resistant, fade resistant, and can reduce energy costs while blocking up to 97% of the sun’s harmful rays.

Specifications

REACH Compliant - Regulated by Registration, Evaluation, Authorization and Restriction of Chemicals. REACH places greater responsibility on industry to manage the risks that chemicals may pose to human health and the environment.

Children’s Toy Act - Does not contain harmful phthalates listed under Section 108 of the Consumer Product Safety Improvement Act of 2008 (CPSIA).

Fire Classification - Passes California U.S. Title 19 (small scale), NFPA701-2015 TM#1 (small scale), NFPA 101 (Class A Rating), UBC (Class 1), BS 5867 2008 Part 2 Type B Performance, NFPA 701 TM #2 (large scale), and CAN/ULC-S 109-03 (large and small scale).

Environmental Certification - GREENGUARD gold certified. Acceptable for use in environments such as schools and healthcare facilities. Complies with requirements of the State of California’s Department of Public Health “Standard Method for Testing and Evaluation of Volatile Organic Chemical Emissions from Indoor Sources Using Environmental Chambers, Version 1.1 (2010)” (also known as California Section 01350).

RoHS Compliant - Free of Lead (Pb), Cadmium (Cd), Mercury (Hg), Hexavalent chromium (Hex-Cr), Polybrominated biphenyls (PBB), and Polybrominated diphenyl ethers (PBDE).

Bacteria and Fungal Resistance - Passes ASTM E 2180, ASTM G21. Includes specially formulated antimicrobial.



FLAME RESISTANT



LEAD FREE



GREENGUARD GOLD



REACH COMPLIANCE



PRINTABLE



RoHS COMPLIANT



MADE IN USA



LIMITED WARRANTY

Technical Data

Item Number: T18F4S, T18F4T

Product Description: A fabric usine .014” diamete vinyl-coated 420 denier polyester core yarn in the warp and fill.

Attribute	ASTM	Warp	Fill	Typical
Construction, end/inch	D3775-12	38 ±0.5	40.0 ±0.5	
Weight, oz/yd ²	D3776-09			16.2
Weight, g/m ²	D3776-09			549.3
Tensile Strength (grab), lbf / daN	D5034-09	414.3 / 184.3	409.2 / 182.0	
Tensile Strength (strip), lbf / daN	D5035-11	220.6 / 98.1	249.3 / 110.9	
Tear Strength (trapezoidal), lbf / daN	D5733	40.1 / 17.8	37.4 / 16.6	
Elongation, %	D5035-11	11.1	12.5	
Abrasion Resistance (CST10/500 cycles/ with no added weight)	D3884-09	No Exposure of Core Yarn		
Flammability Rating		CA Title 19 & NFPA 701		
Weatherability, 1200 hours	G154	Trace Discoloration		
Mildew Resistance	G21-13	No Growth		
Thickness, inches / mm	D1777-96			0.0275 / 0.699

The above results are a representation of real data from single test samples. Presently no specification is incorporated.

Style	Total Solar			Visible			Insulating Glass			Insulating Glass		
	Ts	Rs	As	Ts	Rs	As	1/2” Clr.	1” Clr.	1” HA	1/2” Clr.	1” Clr.	1” HA
Flat Black Profile Angle 0	2	4	94	2	4	94	0.22	0.17	0.12	0.16	0.10	0.09
Flat Black Profile Angle 45	1	2	97	1	2	97	0.12	0.12	0.12	0.09	0.09	0.09

DISTRIBUTED OR MANUFACTURED BY:

***Custom colors and widths available. Minimum order of 1000 yds. Upcharges may apply. ** Available in 33.3 lyd rolls.**



Flat Black
T18F4S002 x 126"

Espresso Texture
T18F4T006 x 126"

Granite
T18F4T005 x 126"



Charcoal
T18F4T008 x 126"

Tobacco
T18F4T007 x 126"

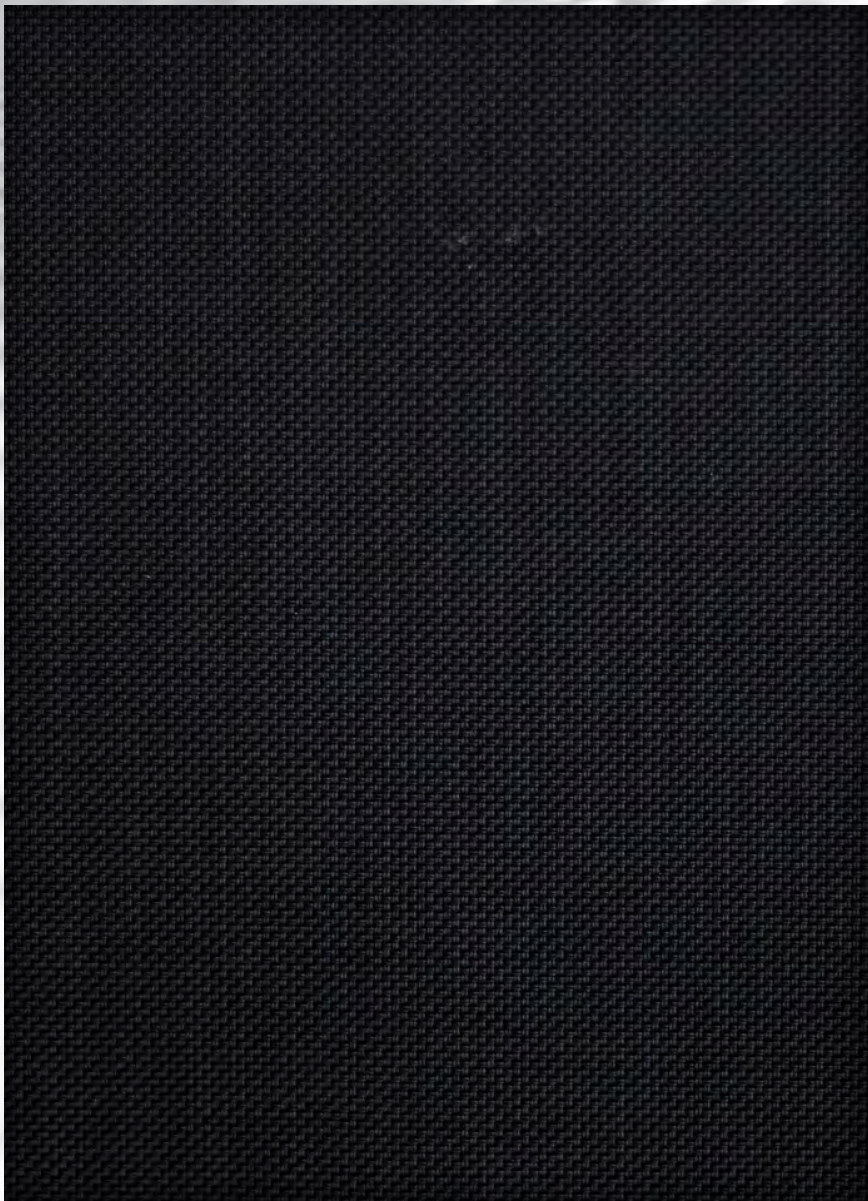
TEXTILENE
BRAND FABRIC
nano™ 97



T18F4S002
Flat Black

Due to the technical limitations of digital cameras and inconsistencies of display monitors, the characteristics and colors of the fabrics seen on your screen may be slightly different than the actual product.

126" = 320.04 cm



Due to the technical limitations of digital cameras and inconsistencies of display monitors, the characteristics and colors of the fabrics seen on your screen may be slightly different than the actual product.

T18F6S002
Black

TEXTILENE® nano™ 99 is a durable, yet lightweight synthetic fabric. It is lighter and finer with the same technical qualities as the original TEXTILENE®. TEXTILENE® nano™ 99 is excellent for exterior and interior use. It is flame resistant, fade resistant, and can reduce energy costs while blocking up to 99% of the sun’s harmful rays.

Specifications

REACH Compliant - Regulated by Registration, Evaluation, Authorization and Restriction of Chemicals. REACH places greater responsibility on industry to manage the risks that chemicals may pose to human health and the environment.

Children’s Toy Act - Does not contain harmful phthalates listed under Section 108 of the Consumer Product Safety Improvement Act of 2008 (CPSIA).

Fire Classification - Passes California U.S. Title 19 (small scale), NFPA701-2015 TM#1 (small scale), NFPA 101 (Class A Rating), UBC (Class 1), BS 5867 2008 Part 2 Type B Performance, NFPA 701 TM #2 (large scale), and CAN/ULC-S 109-03 (large and small scale).

Environmental Certification - GREENGUARD gold certified. Acceptable for use in environments such as schools and healthcare facilities. Complies with requirements of the State of California’s Department of Public Health “Standard Method for Testing and Evaluation of Volatile Organic Chemical Emissions from Indoor Sources Using Environmental Chambers, Version 1.1 (2010)” (also known as California Section 01350).

RoHS Compliant - Free of Lead (Pb), Cadmium (Cd), Mercury (Hg), Hexavalent chromium (Hex-Cr), Polybrominated biphenyls (PBB), and Polybrominated diphenyl ethers (PBDE).

Bacteria and Fungal Resistance - Passes ASTM E 2180, ASTM G21. Includes specially formulated antimicrobial.

Technical Data

Item Number: T18F6S/ F6T

Product Description: A fabric using .014” diameter vinyl-coated 420 denier polyester core yarn in the warp and fill.

Attribute	ASTM	Warp	Fill	Typical
Construction, end/inch	D3775-12	38 ±0.5	42.0 ±0.5	
Weight, oz/yd²	D3776-09			16.2
Weight, g/m²	D3776-09			549.3
Tensile Strength (grab), lbf / daN	D5034-09	459.8 / 204.5	479.8 / 213.4	
Tensile Strength (strip), lbf / daN	D5035-11	246.8 / 109.8	238.2 / 106.0	
Tear Strength (trapezoidal), lbf / daN	D5733	40 / 17.8	42 / 18.7	
Elongation, %	D5035-11	12.5	11.8	
Abrasion Resistance (CST10/500 cycles/ with no added weight)	D3884-09	No Exposure of Core Yarn		
Flammability Rating		CA Title 19 & NFPA 701		
Weatherability, 1200 hours	G154	Trace Discoloration		
Mildew Resistance	G21-13	No Growth		
Thickness, inches / mm	D1777-96			0.0294 / 0.747

The above results are a representation of real data from single test samples. Presently no specification is incorporated.

Style	Total Solar			Visible			Insulating Glass			Insulating Glass		
	Ts	Rs	As	Ts	Rs	As	1/2” Clr.	1” Clr.	1” HA	1/2” Clr.	1” Clr.	1” HA
Black Profile Angle 0	1	4	95	1	4	95	0.21	0.16	0.11	0.16	0.09	0.08
Black Profile Angle 45	1	1	98	1	1	98	0.11	0.11	0.08	0.09	0.08	0.08

DISTRIBUTED OR MANUFACTURED BY:



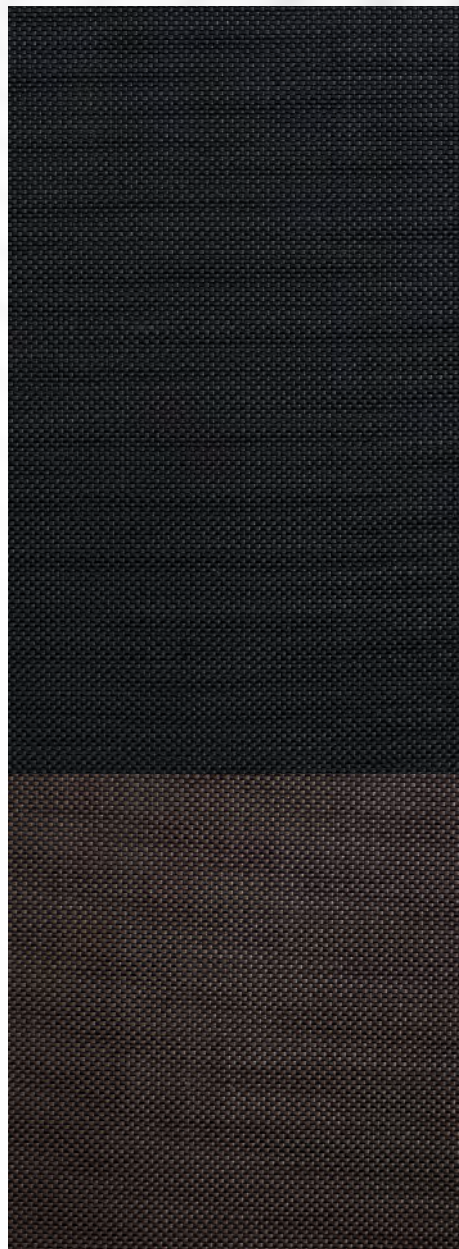
***Custom colors and widths available. Minimum order of 1000 yds. Upcharges may apply. ** Available in 33.3 lyd rolls.**



Black
T18F6S002 x 126"
46 x 24

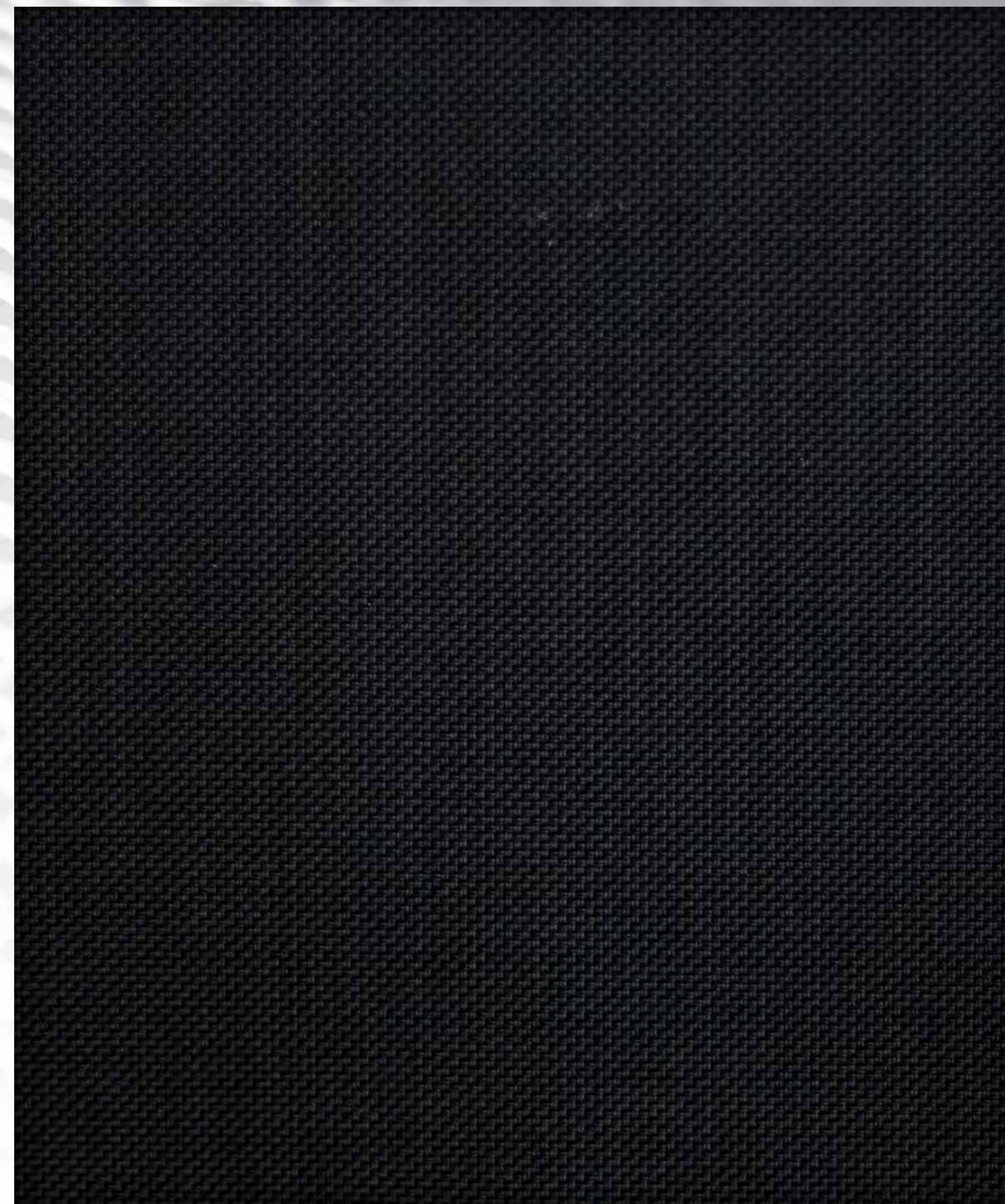
Espresso Texture
T18F6T006 x 126"
46 x 24

Granite
T18F6T005 x 126"
36 x 40



Charcoal
T18F6T008 x 126"
36 x 39

Tobacco
T18F6T007 x 126"
46 x 24



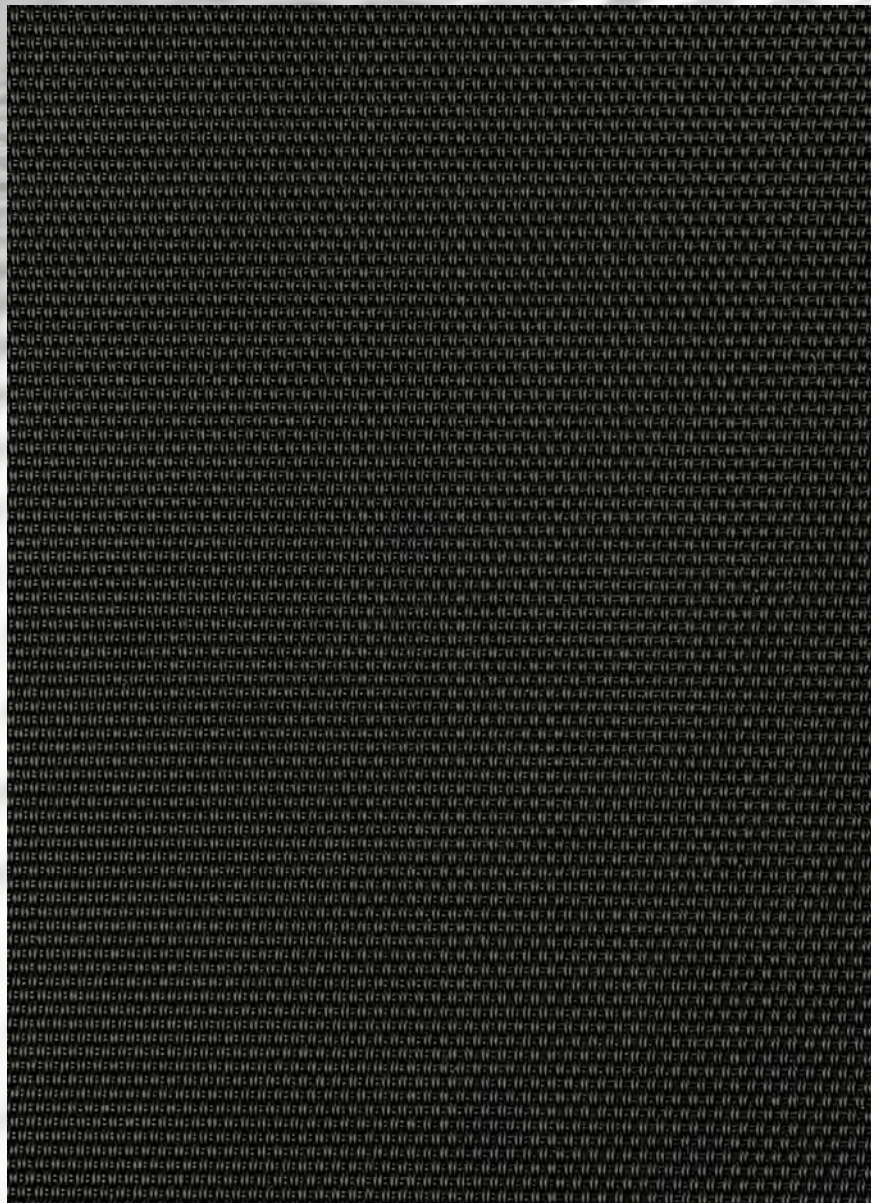
Due to the technical limitations of digital cameras and inconsistencies of display monitors, the characteristics and colors of the fabrics seen on your screen may be slightly different than the actual product.

T18F6S002
Black

126" = 320.04 cm



15 Year Warranty



Due to the technical limitations of digital cameras and inconsistencies of display monitors, the characteristics and colors of the fabrics seen on your screen may be slightly different than the actual product.

Specifications

Warranty - Twitchell Technical Products, LLC produces durable, all weather fabrics that are unmatched for quality and durability. Dim Out™ brand fabrics are covered by a **15-year** limited warranty for fixed & operable shading applications and 3-year limited warranty for all other end uses from the original date of purchase.

REACH Compliant - Regulated by Registration, Evaluation, Authorization and Restriction of Chemicals. REACH places greater responsibility on industry to manage the risks that chemicals may pose to human health and the environment.

Children's Toy Act - Does not contain harmful phthalates listed under Section 108 of the Consumer Product Safety Improvement Act of 2008 (CPSIA).

Fire Classification - Passes California U.S. Title 19 (small scale), NFPA701-2015 TM#1 (small scale), NFPA 101 (Class A Rating), UBC (Class 1), BS 5867 2008 Part 2 Type B Performance, NFPA 701 TM #2 (large scale), and CAN/ULC-S 109-03 (large and small scale).

Environmental Certification - GREENGUARD gold certified. Acceptable for use in environments such as schools and healthcare facilities. Complies with requirements of the State of California's Department of Public Health "Standard Method for Testing and Evaluation of Volatile Organic Chemical Emissions from Indoor Sources Using Environmental Chambers, Version 1.1 (2010)" (also known as California Section 01350).

RoHS Compliant - Free of Lead (Pb), Cadmium (Cd), Mercury (Hg), Hexavalent chromium (Hex-Cr), Polybrominated biphenyls (PBB), and Polybrominated diphenyl ethers (PBDE).

Bacteria and Fungal Resistance - Passes ASTM E 2180, ASTM G21. Includes specially formulated antimicrobial.

Technical Data

Product Number: T18C8 | **Roll Length:** Approximately 30 Linear Yards

Product Description: A fabric using .010" diameter vinyl-coated 220 denier polyester core yarn in the warp and fill.

Attribute	ASTM	Warp	Fill	Typical
Construction	D3775-17	58.0 +/- 0.5	35.0 +/- 0.5	
Weight, oz/yd2	D3776-17			19.5
Tensile Strength (grab), lbf	D5034-09	320.1	226.1	
Tensile Strength (strip), lbf	D5035-11	199.6	135.4	
Tear Strength, (Trapezodial), lbf	D5733	33.3	15.9	
Elongation, %	D5035-11	12.2	9.2	
Abrasion Resistances	D3884-09	No exposure to core yarn	No exposure to core yarn	
Flammability Rating				CA Title 19 & NFPA 701
Weatherability, 1200 hours	G154-16	Trace discoloration	Trace discoloration	
Mildew Resistance	G21-13			No Growth

The above results are a representation of real data from single test samples. Presently no specification is incorporated.

DISTRIBUTED OR MANUFACTURED BY:



Densely Woven Versatility and Function.

Explore the versatility and function of Twitchell's latest dense canvas-like fabric. Designed with a tightly woven construction, **Dim Out™** offers privacy without total darkness with water-resistant perks. The perfect indoor or outdoor solution with eight color options and available in a 120" width.

WEAVE CONSTRUCTION: 58 x 35



*Custom colors and widths available. Minimum order of 1000 yds. Upcharges may apply. ** Available in 33.3 lyd rolls.

1-800-633-7550 | twitchellcorp.com

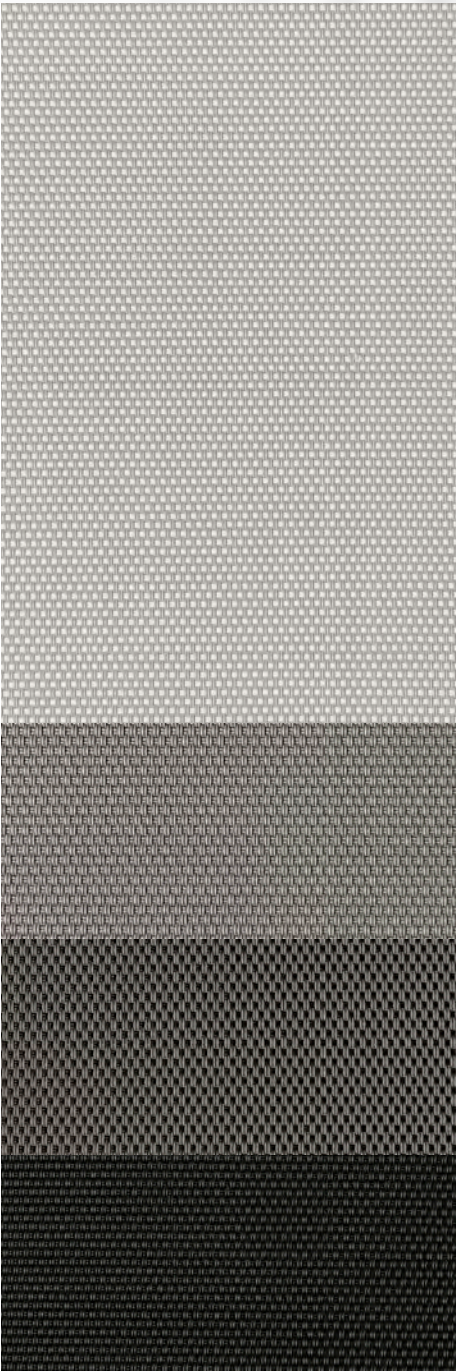


White
T18C8S002 x 120"

Tan
T18C8T006 x 120"

Putty
T18C8T003 x 120"

Tobacco
T18C8T001 x 120"

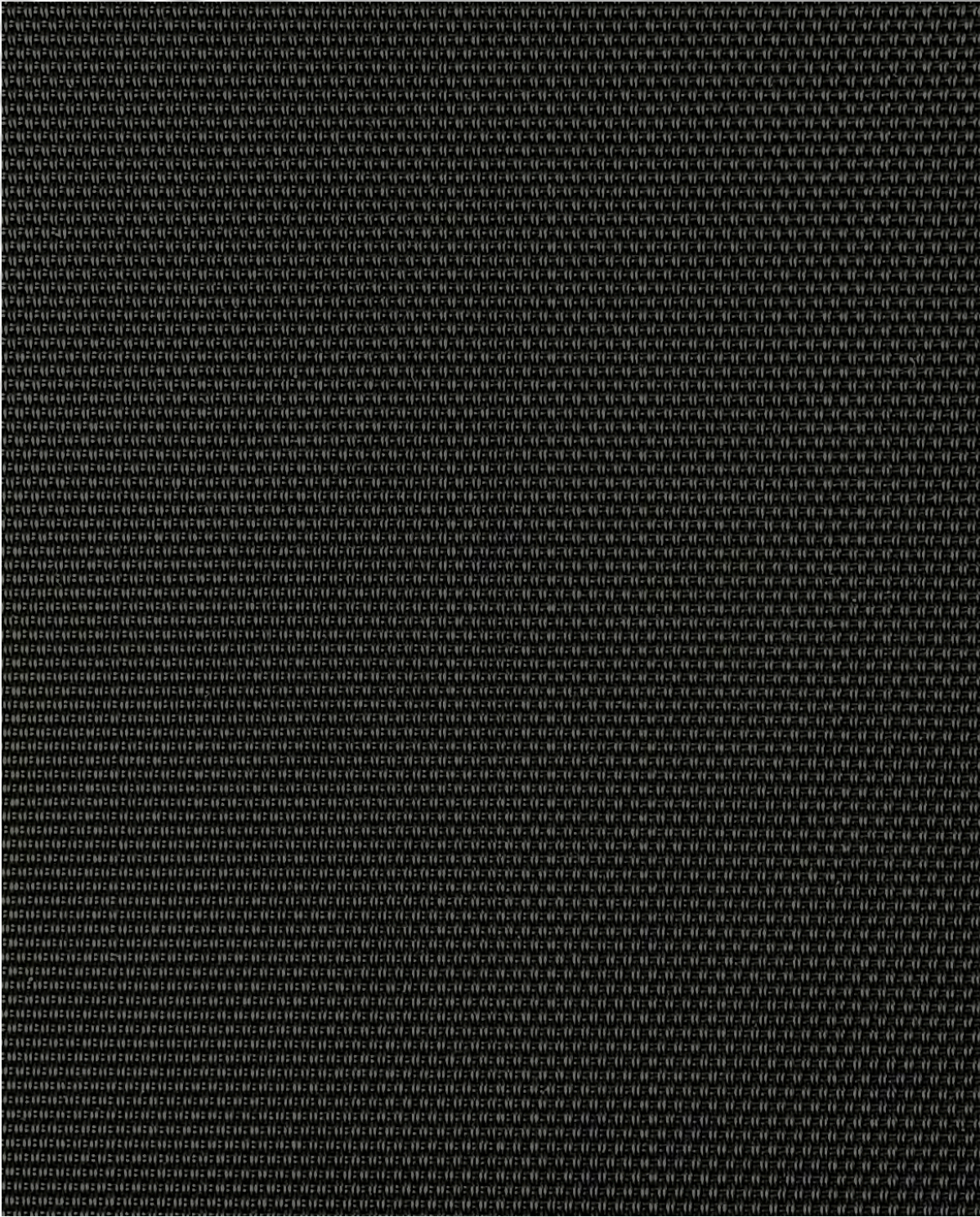


Light Grey
T18C8T005 x 120"

Grey
T18C8T002 x 120"

Charcoal
T18C8T004 x 120"

Flat Black
T18C8S001 x 120"



Flat Black
T18C8S001 x 120"

Due to the technical limitations of digital cameras and inconsistencies of display monitors, the characteristics and colors of the fabrics seen on your screen may be slightly different than the actual product.



Water
Resistant

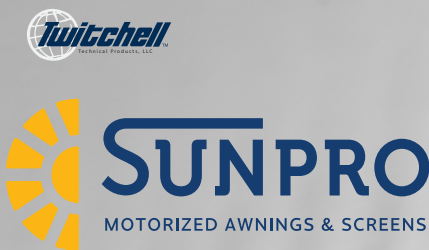


Offers
Privacy



Versatile
Applications

15
Year
Warranty



15 Year Warranty



OmegaTEX™ is one of the strongest, all-inclusive screen options on the market. Designed to offer protection from sun, wind, rain, insects, dust, and debris. OmegaTEX™ protects against storm events and has passed certification under the Dade County Projectile Test when used with screening systems NOA labeled and Miami-Dade tested.

WEAVE CONSTRUCTION: 22 x 13.5



*Custom colors and widths available. Minimum order of 1000 yds. Upcharges may apply. ** Available in 30 lyd rolls.

1-800-633-7550 | twitchellcorp.com

Specifications

REACH Compliant - Regulated by Registration, Evaluation, Authorization and Restriction of Chemicals. REACH places greater responsibility on industry to manage the risks that chemicals may pose to human health and the environment.

Fire Classification - Passes California U.S. Title 19 (small scale), NFPA701-2015 TM#1 (small scale), NFPA 101 (Class A Rating), UBC (Class 1), BS 5867 2008 Part 2 Type B Performance, NFPA 701 TM #2 (large scale), and CAN/ULC-S 109-03 (large and small scale).

Bacteria and Fungal Resistance - Passes ASTM E 2180, ASTM G21. Includes specially formulated antimicrobial.

RoHS Compliant - Free of Lead (Pb), Cadmium (Cd), Mercury (Hg), Hexavalent chromium (Hex-Cr), Polybrominated biphenyls (PBB), and Polybrominated diphenyl ethers (PBDE).

Children's Toy Act - Does not contain harmful phthalates listed under Section 108 of the Consumer Product Safety Improvement Act of 2008 (CPSIA).

Environmental Certification - GREENGUARD gold certified. Acceptable for use in environments such as schools and healthcare facilities. Complies with requirements of the State of California's Department of Public Health "Standard Method for Testing and Evaluation of Volatile Organic Chemical Emissions from Indoor Sources Using Environmental Chambers, Version 1.1 (2010)" (also known as California Section 01350).

Warranty - Twitchell Technical Products, LLC produces durable, all weather fabrics that are unmatched for quality and durability. OmegaTEX™ brand fabrics are covered by a 15-year limited warranty for fixed & operable shading applications and 3-year limited warranty for all other end uses from the original date of purchase.

Technical Data

Product Number: T18KKS | **Roll Length:** Approximately 30 Linear Yards
Product Description: A fabric .027" diameter vinyl coated 1500 denier polyester core yarns in warp and .030" diameter vinyl coated 2000 denier Twaron core yarns in fill.

Attribute	ASTM	Warp	Fill	Typical
Construction	D3775-96	22.0 +/- 0.5	13.5 +/- 0.5	
Weight, oz/yd2	D3776-96			19.5
Tensile Strength (grab), lbf	D5034-95	711.3	748.9	
Tensile Strength (strip), lbf	D5035-95	416.7	251.4	
Tear Strength, (Trapezodial), lbf	D1117-97	181.6	285	
Elongation, %	D5035-95	42.8	12.3	
Abrasion Resistances	D3884-92	No exposure to core yarn	No exposure to core yarn	
Weatherability, 1200 hours	G53-96	Trace discoloration	Trace discoloration	
Ball Burst, lbf*	D3787			460+
Bursting Strength, psi*	D3786			1250+
Puncture Resistance, lbf	D4833			364
Porosity Calculation				Open: 9% / Cover: 91%
Flammability Rating				CS 191-53

The above results are a representation of real data from single test samples. Presently no specification is incorporated.

Style	Ts	Rs	As	Tv	Rv	Av	Tuv	O-F	SC 1/8" CI	R-Factor 1/8" CL
Black Profile Angle 0	0.08	0.04	0.88	0.12	0.05	0.83	0.08	0.08	0.18	1.365
Black Profile Angle 45	0.05	0.04	0.91	0.06	0.13	0.81	0.08	0.08	0.16	1.365

DISTRIBUTED OR MANUFACTURED BY:



OMEGATEX™

HURRICANE SCREEN

White:
T18KKS018 x 126"

White/Tan:
T18KKS008 x 126"

Black/Tan:
T18KKS007 x 126"

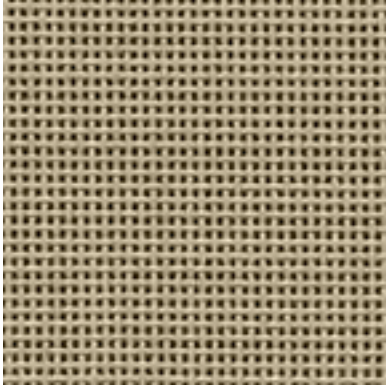
Black:
T18KKS002 x 126"

Black
T18KKS002 x 126"

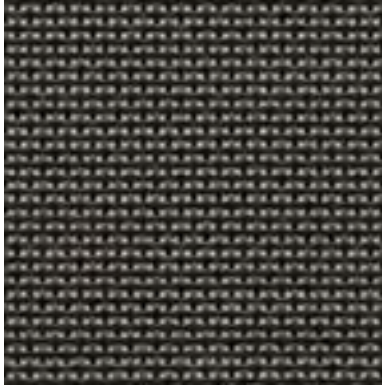


FABRICS BY **PHIFER**
INCORPORATED

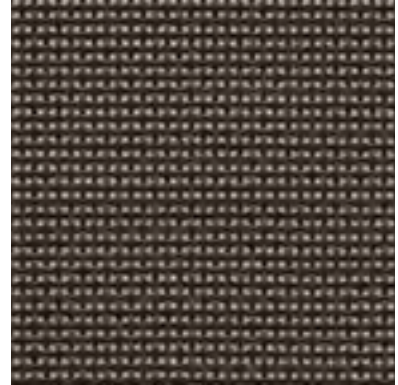
SUNTEX® 80 SOLAR SCREENS



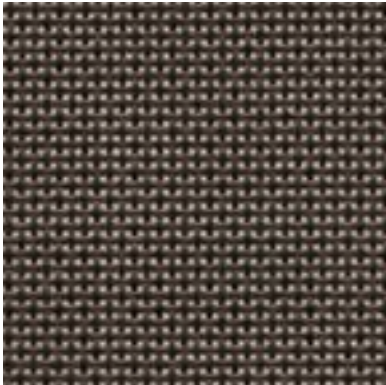
BEIGE



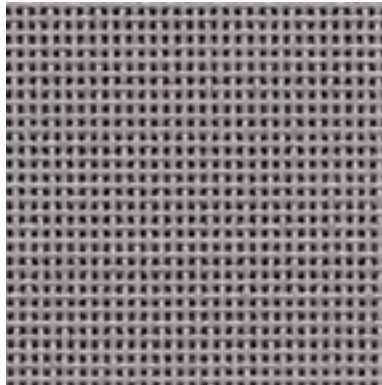
BLACK



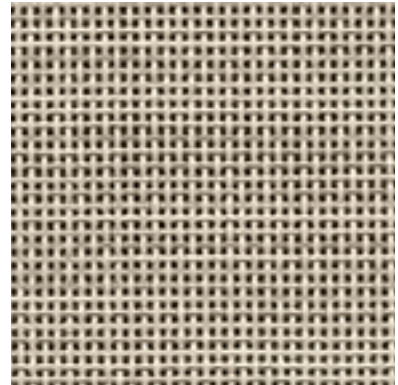
BROWN



DARK BRONZE



GREY

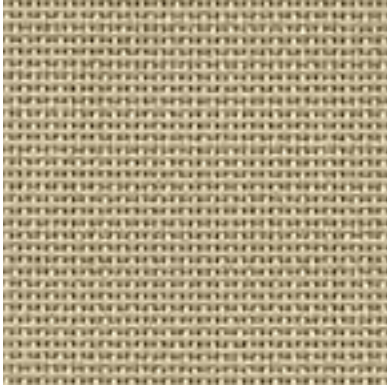


STUCCO

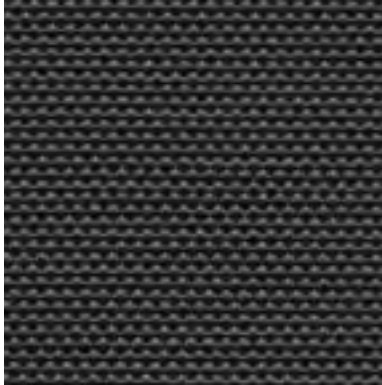


FABRICS BY **PHIFER**
INCORPORATED

SUNTEX® 90 SOLAR SCREENS



BEIGE



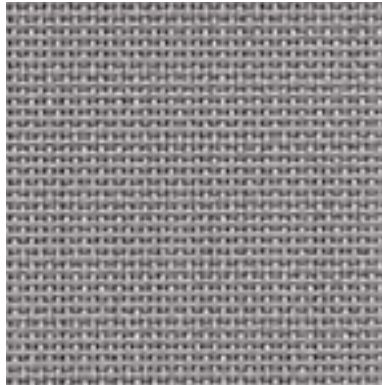
BLACK



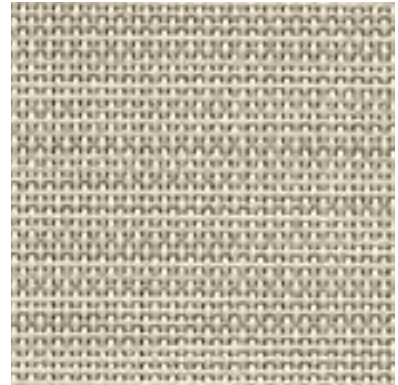
BROWN



DARK BRONZE



GREY



STUCCO

SUNTEX® 95 PRIVACY SCREENS



ALPACA



BLACK



CARBON



CHESTNUT



DARK BRONZE



MOCHA



SAND



STUCCO



WHITE GREY



WHITE

SHEERWEAVE® SUN CONTROL SCREENS



2500 1% V21 CHARCOAL



2500 1% V24
CHARCOAL CHESTNUT



2500 1% V32
CHAROCAL ALPACA



2500 1% Q20 BEIGE



7100 BLACKOUT Q05 BONE



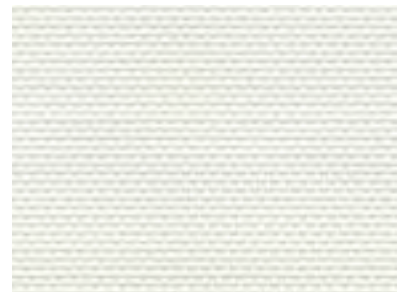
7100 BLACKOUT P04
WHITE BONE



2500 1% P14
OYSTER PEARL GRAY



2500 1% P13 OYSTER BEIGE



2500 1% P12 OYSTER



7100 BLACKOUT P02 WHITE