

OPEN ROLLER 2.0 CABLE GUIDED SCREEN SYSTEM



MANUAL OR MOTORIZED SCREEN INSTALLATION INSTRUCTIONS



TOOLS NEEDED AND PREPARATION

TOOLS FOR ASSEMBLY

- Tape Measure
- Impact Driver
- Drill
- Levels
- Impact Bits
- 5mm Allen Wrench
- Swage Crimper
- Plumb Line
- Cable Cutter
- 7/16" Wrenches (2)

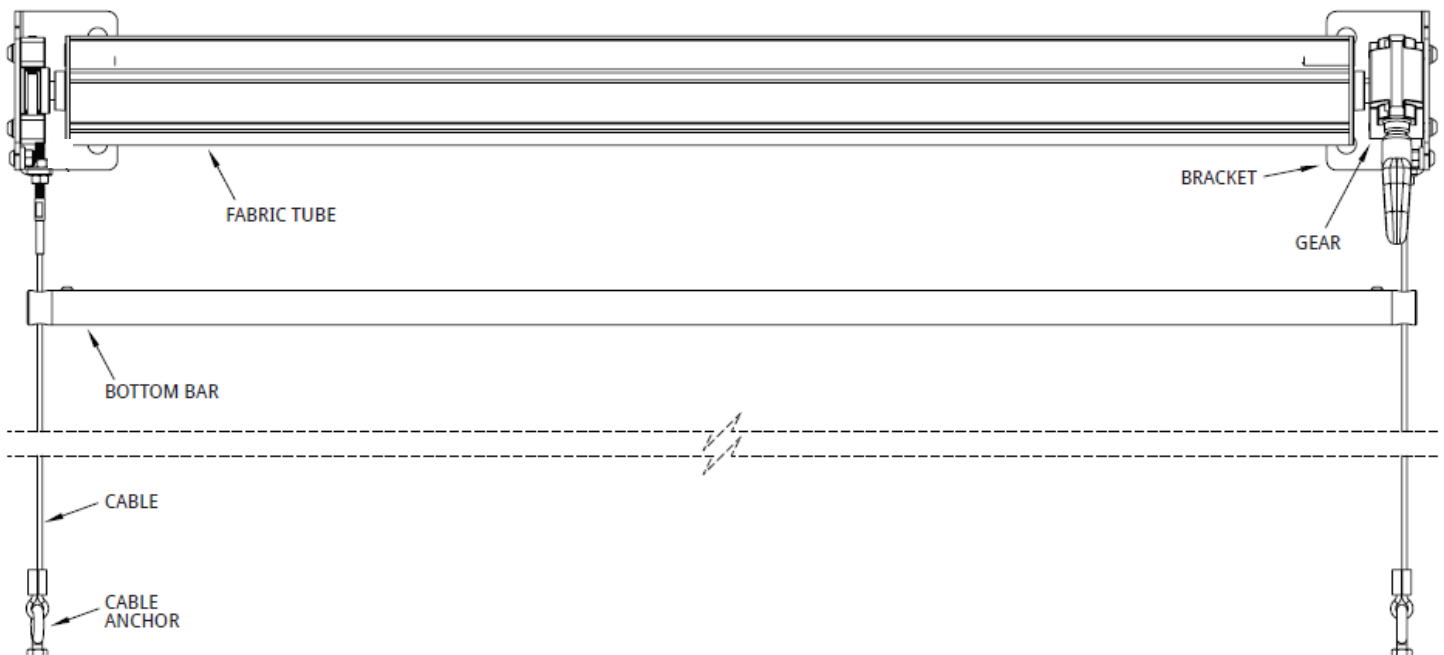
HARDWARE PROVIDED

- Mounting Brackets (2)
- Gear (or Motor) Drive (1)
- Cable w/ Tension Bolt (2)
- Cable Swage Eye (2)
- Cable Anchor (2)
- Roll Tube (1)
- Screen Material (1)
- Bottom Bar Cable Guide (2)

NOT PROVIDED

- 5/16x4 1/2" Bracket Lag Screws (or appropriate) (4)
- #8 x 3" Stainless Wood Screw (or appropriate) (4)

COMPONENTS



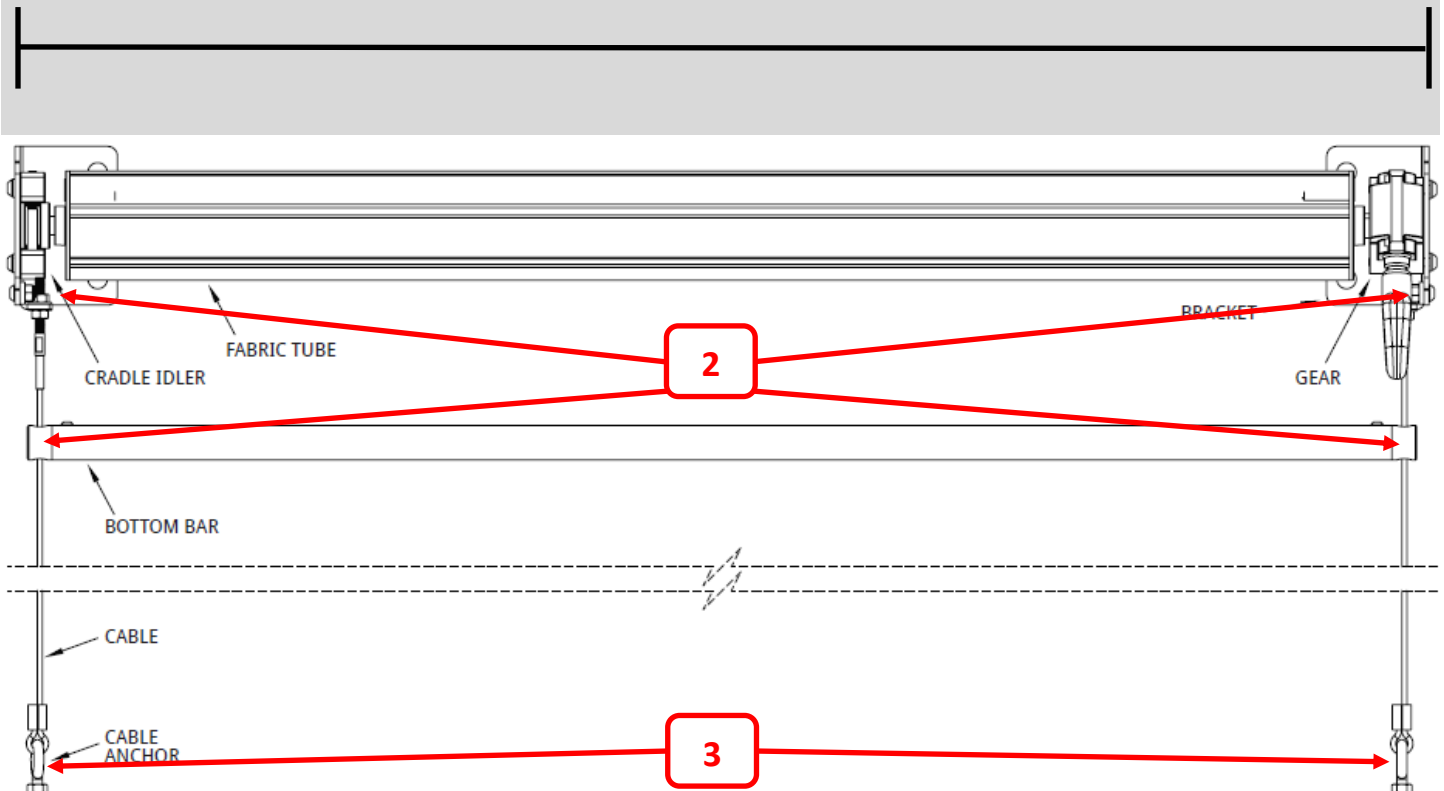
STEP 1

VERIFYING MEASUREMENTS

Screen measurements are as follows:

- 1) Mounting Width is measured from **outside** of bracket to **outside** of bracket
- 2) Verify upper cable mount width is the same as bottom bar cable guide holes
- 3) Lower cable mounts **MUST** be mounted plumb and equal distance as upper cable mount and bottom bar cable guide holes

1) Measurement is outside of bracket to outside of bracket



STEP 2

UPPER BRACKETS (FACE MOUNT)

- a) Mark outer edge bracket location at ordered width
- b) Use appropriate hardware (not provided) to mount and level Upper Brackets



Wood Lag

| Self-Drilling Metal

| Concrete Tapping (Tapcon)

STEP 2

UPPER BRACKETS (CEILING MOUNT)

- a) Mark outer edge bracket location at ordered width
- b) Use appropriate hardware (not provided) to mount and level Upper Brackets



Wood Lag



Self-Drilling Metal



Concrete Tapping (Tapcon)

STEP 3

INSTALL ROLL TUBE—MOTORIZED

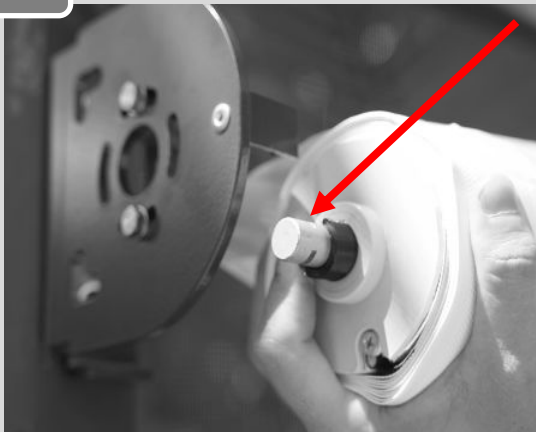
- a) Remove Idler Pin, Spacer and Clip from Bracket and place in idler
- b) Insert drive end into locking plate (motor clip)
- c) Slide idler pin into bracket and install hairpin clip



STEP 3

INSTALL ROLL TUBE—MANUAL GEAR

- a) Remove Idler Pin, Spacer and Clip from Bracket and place in idler
- b) Insert square drive end into manual gear drive
- c) Slide idler pin into bracket and install hairpin clip



STEP 4

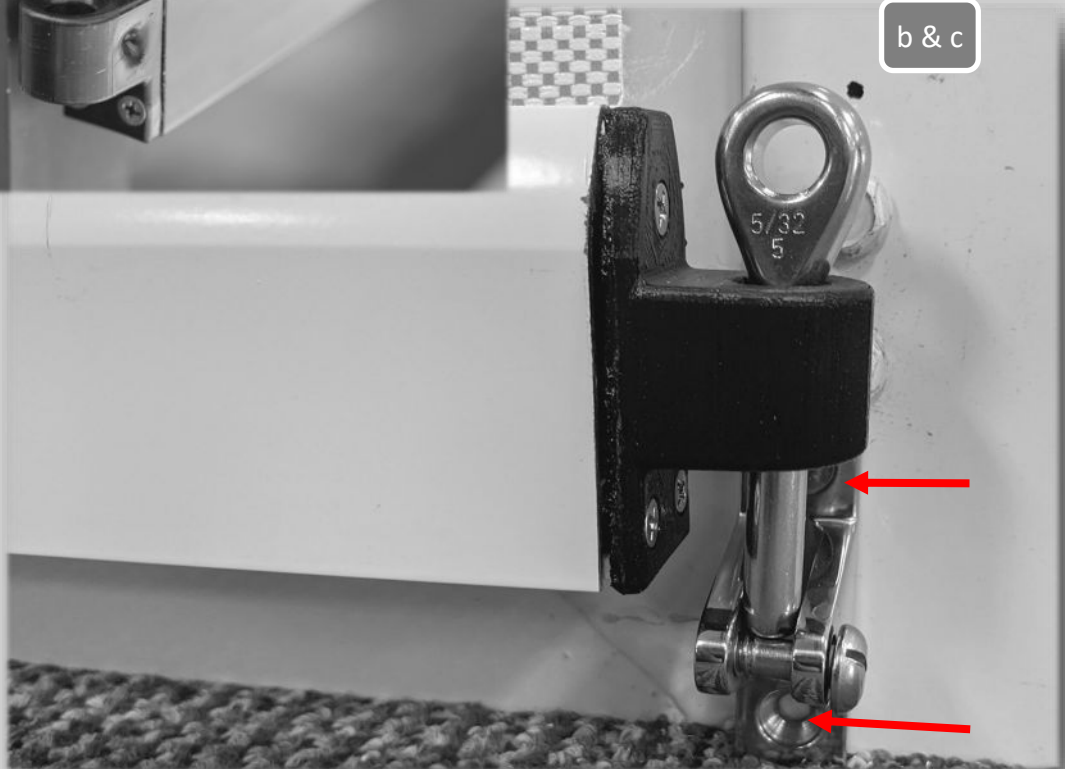
LOWER CABLE BRACKETS

- a) Lower Screen and install the bottom bar cable guides
- b) Insert bottom cable swage eye down through the bottom bar cable guide to identify anchor point.
- c) Mark lower bracket mounting location (Lower bracket can be either wall or floor mounted)

a



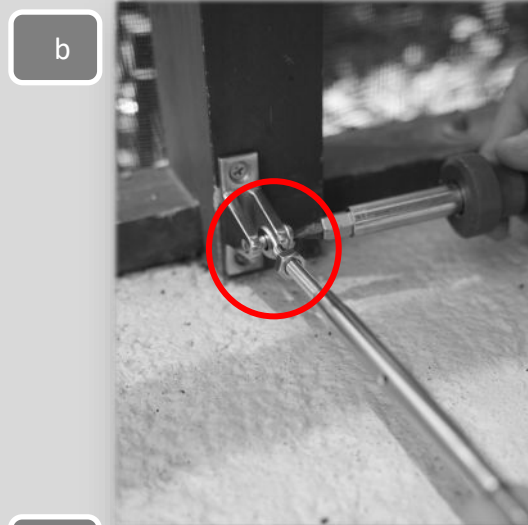
b & c



STEP 5

LOWER BRACKET AND CABLE ASSEMBLY

- a) Install lower cable bracket
- b) Temporarily install turnbuckle to lower cable bracket
- c) From the inside of the bracket, install upper cable fitting in upper notch for wall mount, or rear notch for ceiling mount
- d) Route cable through bottom bar guide plug

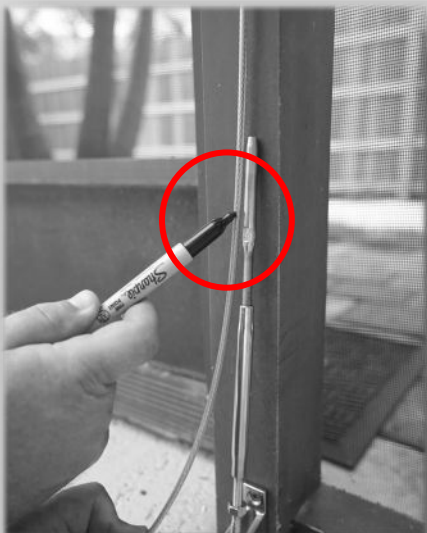


STEP 5

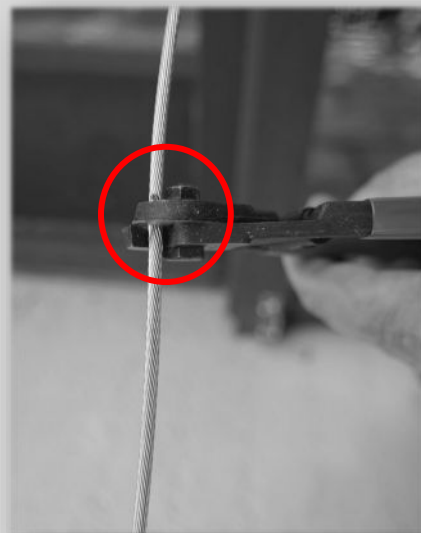
CABLE ASSEMBLY CONTINUED

- a) Loosen turnbuckle all the way, and mark desired cable length
- b) Cut cable with bypass cutters
- c) Install swage turnbuckle onto cable
- d) Crimp swage fitting with proper swage crimpers

a



b



c



d

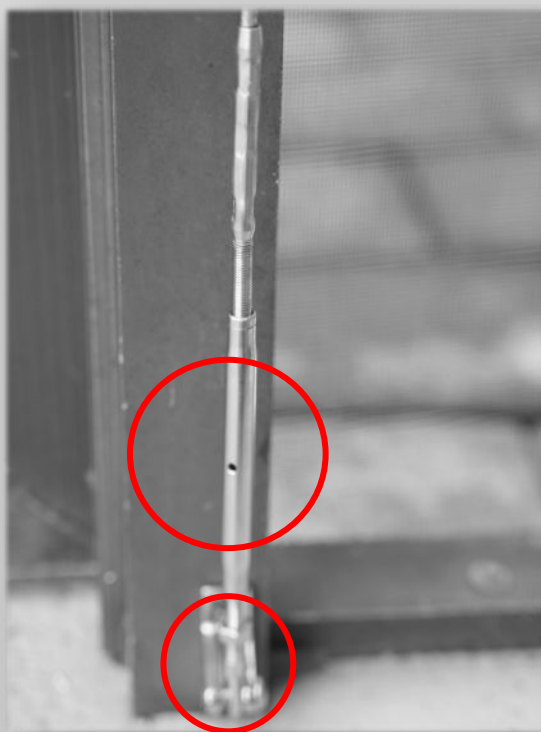


STEP 6

CABLE ADJUSTMENTS

- a) Reinstall turnbuckle and tighten to adjust the cable tension . Use the jam nut on bottom of turnbuckle to lock in place.

*****Do NOT overtighten the cable tension*****



TEST FUNCTION

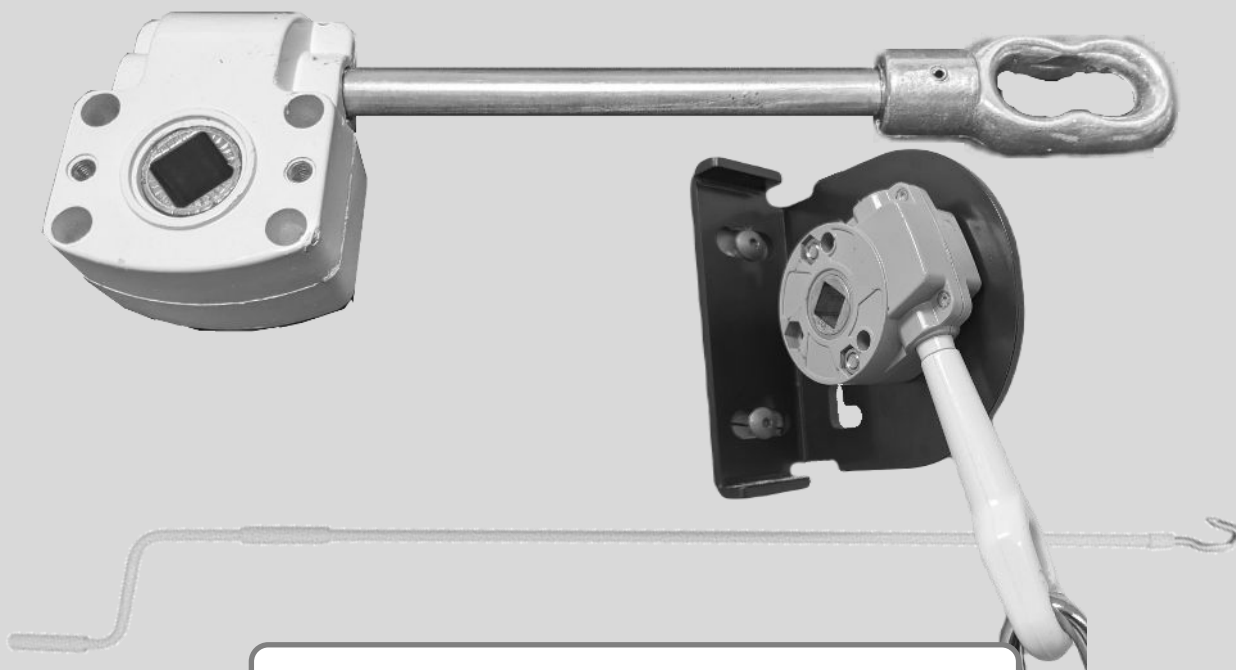


YOUR INSTALL IS NOW COMPLETE

APPENDIX A

DRIVE OPTIONS

Manual Drive—Only available in WHITE



MOTOR DRIVE



APPENDIX B

PARTS

Mounting
Brackets



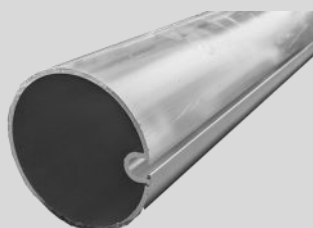
Motor
Drive &
Remote



Manual
Gear Drive



Roll Tube



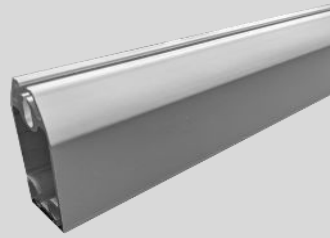
Roll Tube
Idler & Pin
Kit



APPENDIX B

PARTS (CONT.)

Bottom Bar



Bottom Bar
Plug



Guide
Cable Asm



Cable
Thimble



Lower
Cable
Anchor

