

Title:	Dooya Awning Remote Battery Replacement - DC1600-DC1602	Document No. TR-W-011
Author:	Mason Goin	Revision Date - 0 - 08/21/24

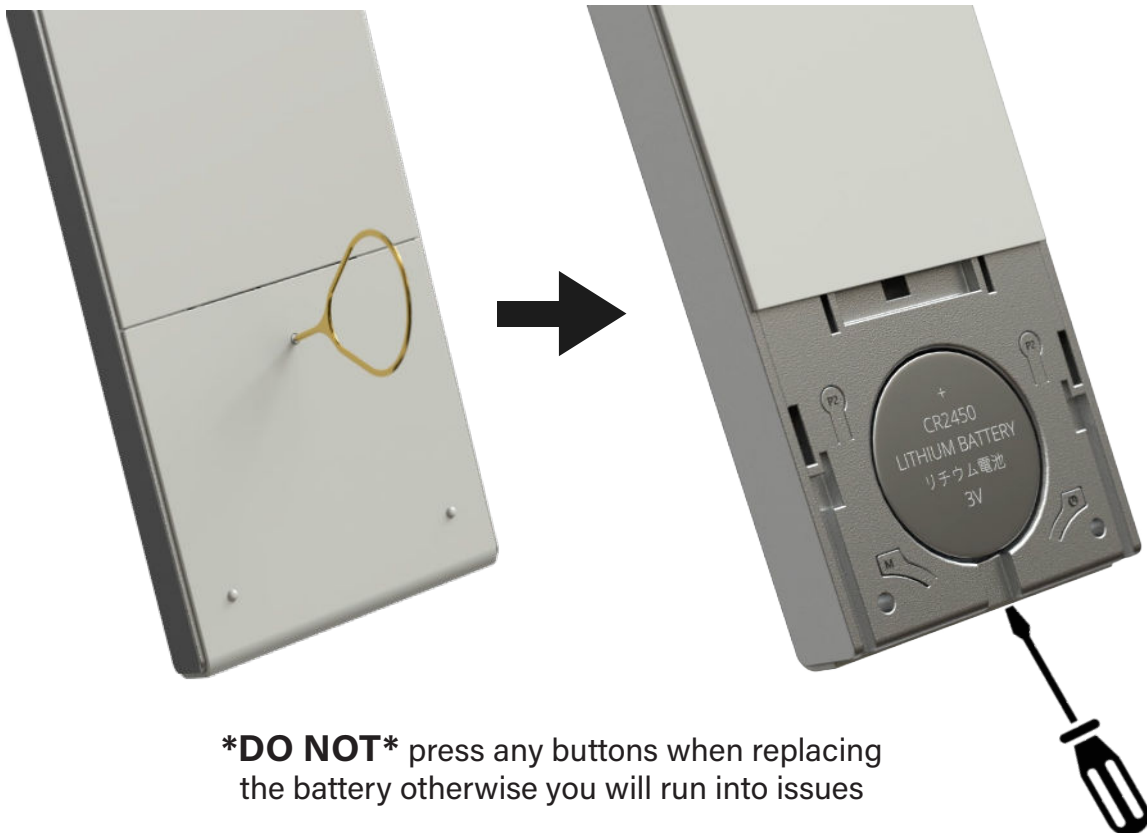
## Dooya Awning Remote Battery Replacement DC1600 - DC1602

**Step 1:** Flip your remote to the backside to reveal the back cover

**Step 2:** Use a small pin-like object ( i.e. paperclip) and insert it into the small hole shown above

**Step 3:** Slide the battery cover down to reveal the CR2450 battery. Use a flathead screwdriver to pop out the old battery. Simply replace the battery with a new one

**Step 4:** Reinstall the battery cover by sliding it back into place, you will hear a click



**\*DO NOT\*** press any buttons when replacing the battery otherwise you will run into issues