

Title:	Dooya Screen Remote Battery Replacement - DD2700-DD2702	Document No. TR-W-010
Author:	Mason Goin	Revision Date - 0 - 08/21/24

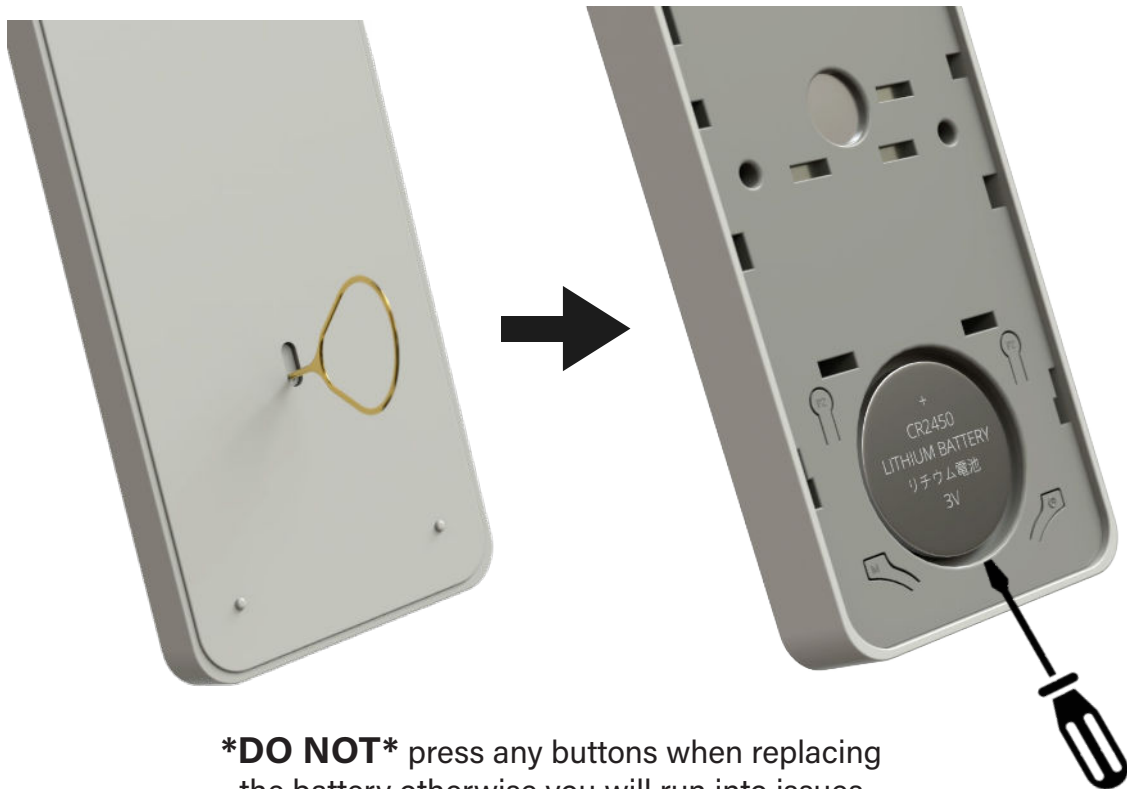
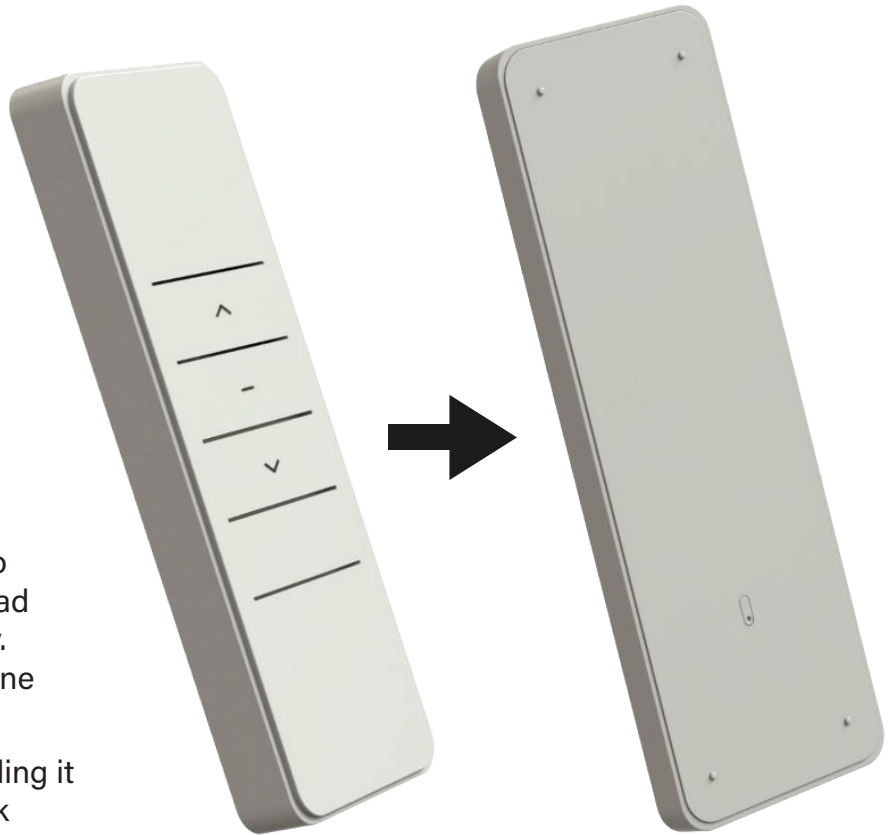
Dooya Screen Remote Battery Replacement DD2700 - DD2702

Step 1: Flip your remote to the backside to reveal the back cover

Step 2: Use a small pin-like object (i.e. paperclip) and insert it into the small hole shown above

Step 3: Slide the back cover down to reveal the CR2450 battery. Use a flathead screwdriver to pop out the old battery. Simply replace the battery with a new one

Step 4: Reinstall the back cover by sliding it back into place, you will hear a click



DO NOT press any buttons when replacing the battery otherwise you will run into issues