

Title:	Somfy Remote Battery Replacement	Document No. TR-W-012
Author:	Mason Goin	Revision Date - 0 - 08/21/24

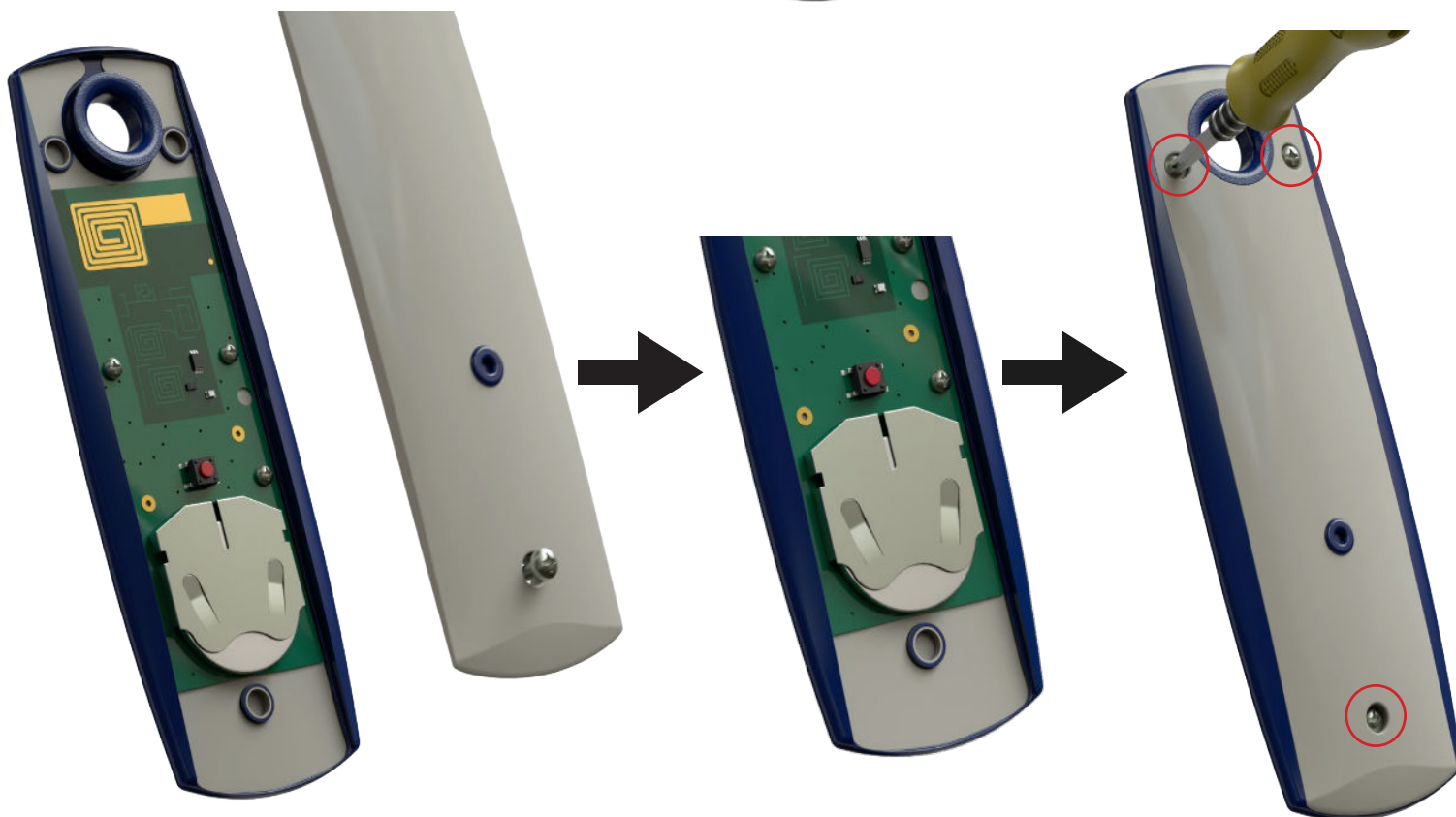
## Somfy Remote Battery Replacement

**Step 1:** Flip your remote to the backside to reveal the back cover

**Step 2:** Use a phillips head screwdriver to unscrew all 3 screws holding the cover

**Step 3:** Remove the cover to reveal the battery, slide down the old battery and replace it with a new battery (CR2430)

**Step 4:** Reinstall the cover and use the phillips head screwdriver to secure all 3 screws back into place



**\*DO NOT\*** press any buttons when replacing the battery otherwise you will run into issues